



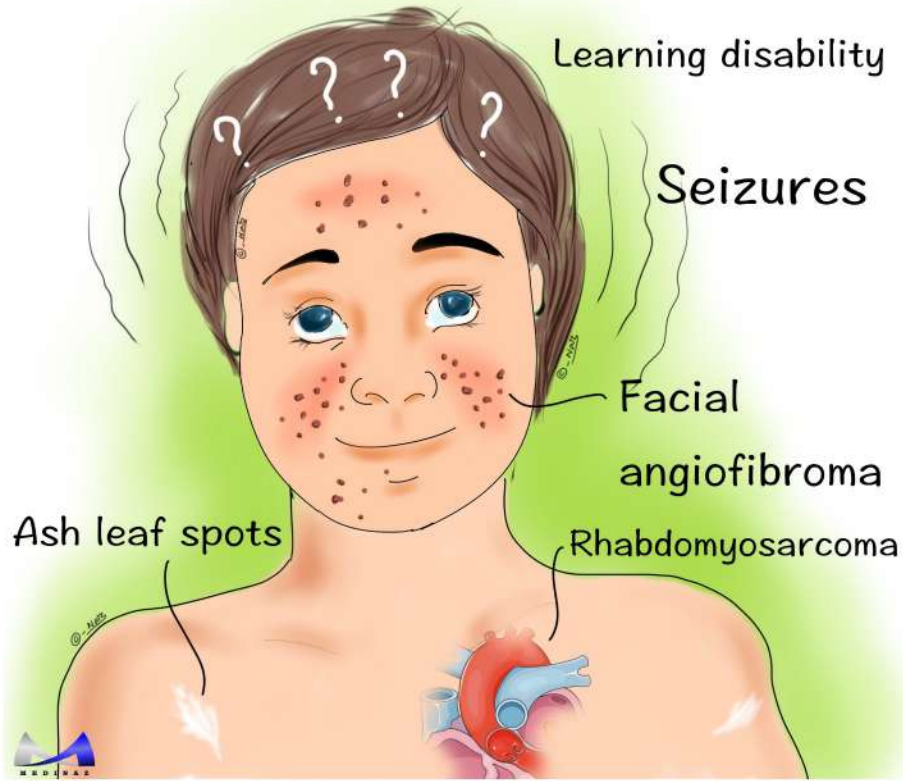
# INDEX

- Cardiovascular system
- Endocrine system
- Gastroenterology
- Haematology
- Infectious diseases
- Integumentary system
- Liver and Biliary system
- Musculoskeletal system
- Nervous system
- Psychiatry
- Renal system
- Reproductive system
- Respiratory system
- Drug of choice
- FDA approved drugs 2019



# Tuberous Sclerosis

www.medinaz.com

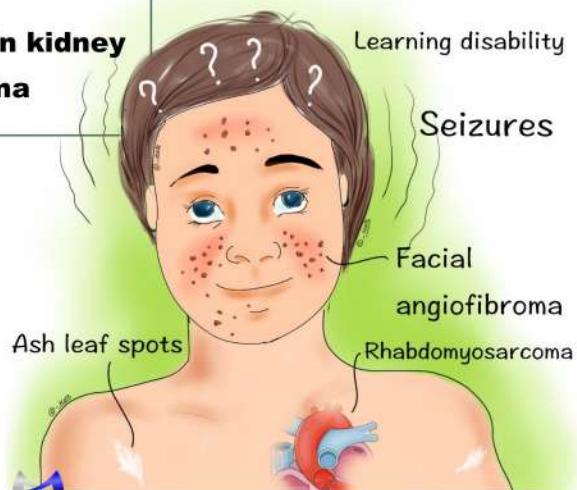


# Tuberous Sclerosis

www.medinaz.com

- Ash leaf spots**
- Shagreen patches**
- Heart rhabdomyosarcoma**
- Lung hamartomas**
- Epilepsy**
- Angiomyolipoma in kidney**
- Facial angiofibroma**

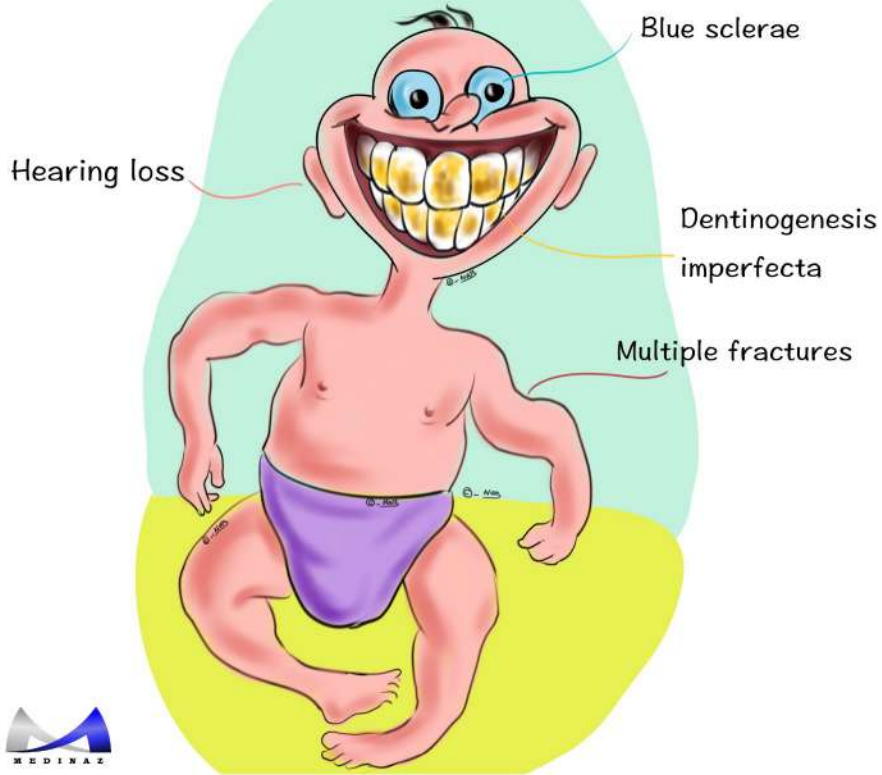
“ASH LEAF”





# Osteogenesis Imperfecta

www.medinaz.com

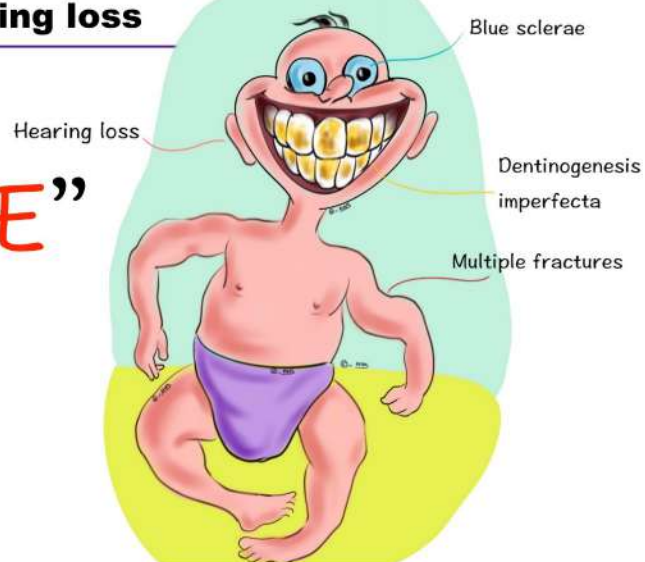


# Osteogenesis Imperfecta

www.medinaz.com

**B**ones = multiple fractures  
**I** (eye) = blue sclerae  
**T**eeth = dental imperfections  
**E**ar = hearing loss

“**BITE**”

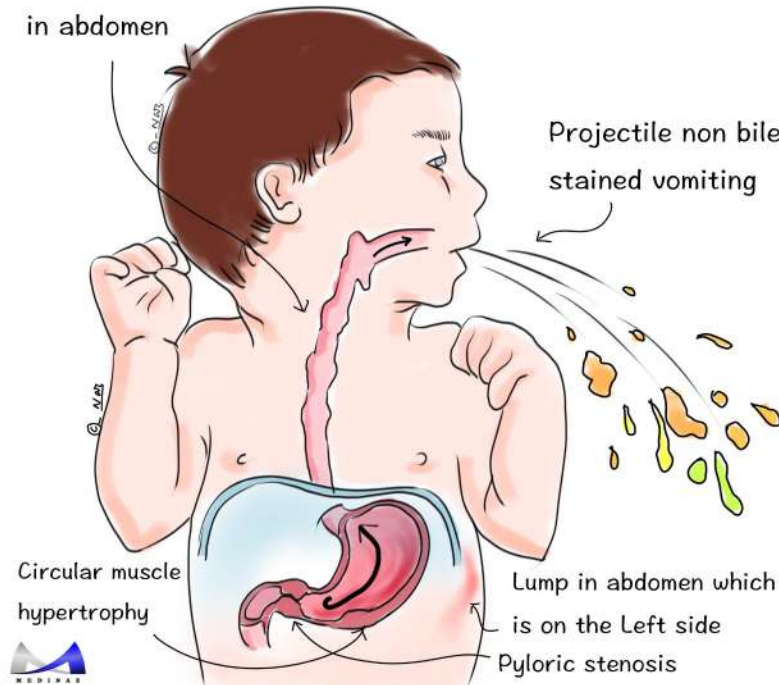




# Pyloric Stenosis

www.medinaz.com

Visible peristalsis  
in abdomen



# Pyloric Stenosis

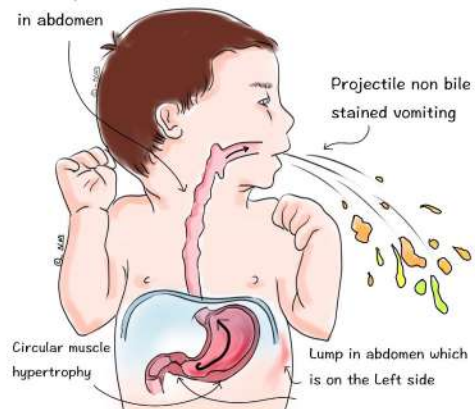
www.medinaz.com

- Peristalsis (Visible peristalsis in abdomen)
- Yuck! So the kid vomits everything he eats (non bile stained vomiting)
- Lump in abdomen which is on the Left side
- Olive mass, Doughnut sign on USG
- Ramstedt's pyloromyotomy (treatment)
- Imbalance of electrolytes
- Circular muscle hypertrophy

“PYLORIC”



Visible peristalsis  
in abdomen





# Kawasaki Disease

www.medinaz.com

Apply "Warm CREAM" in  
Kawasaki disease

**W**arm = **F**ever >5 days  
**C** = **C**onjunctivitis (non-exudate)  
**R** = **R**ash  
**E** = **E**dema / **E**rythema of  
hands & feet  
**A** = **A**denopathy cervical  
**M** = **M**ucositis, strawberry  
tongue



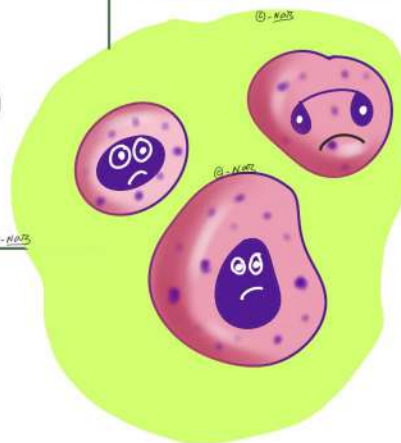
 naz\_artonomy

# Leukaemia signs & symptoms

www.medinaz.com

Light skin (pallor)  
Enlarged spleen, liver lymph nodes  
Underweight  
Kidney failure  
Excess heat (fever)  
Mottled skin (haemorrhage)  
Infections  
Anaemia

"LEUKEMIA"





## Congenital myopathy features

www.medinaz.com

- Dominantly inherited
- Reflexes decreased
- Enzymes normal
- Apathetic floppy baby
- Milestones delayed



“DREAM”



## Duchenne Muscular Dystrophy

www.medinaz.com

Age: 3-6 years

Shoulders and arms are held back awkwardly when walking

Sway back

Weak butt muscles

Pseudohypertrophy of calf muscles

Tight heel cord

Belly sticks out due to weak belly muscles

Poor balance falls often

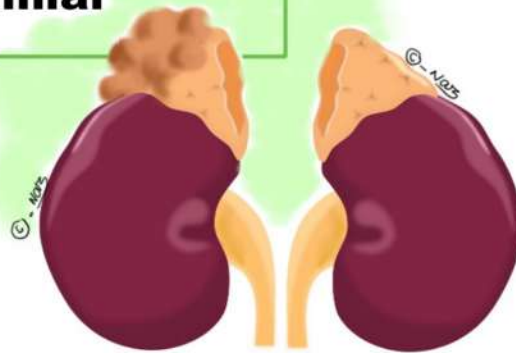
walking on toes





## 10% Rule of PHEOCHROMOCYTOMA

- 10% extra-adrenal**
- 10% bilateral**
- 10% malignant**
- 10% in children**
- 10% familial**



## Rickets Clinical Features

[www.medinaz.com](http://www.medinaz.com)

