



CONTENTS

CHAPTER 1 CELL INJURY

- Apoptosis - 1
- Extrinsic pathway of apoptosis - 1
- Apoptotic genes - 2
- Coagulative necrosis - 2
- Dystrophic calcification - 3
- Tumors having dystrophic calcification - 3
- Metaplasia - 4
- Hyperplasia vs Hypertrophy vs Anaplasia vs Metaplasia - 4

CHAPTER 2 INFLAMMATION

- Acute ischemia signs - 6
- Acute phase reactants - 6
- Alpha-feroprotein associated with - 7
- Common conditions associated with granuloma formation - 7
- Eosinophilia causes - 8
- How to identify deep wound infection - 8
- How to identify superficial wound infection - 9
- PgI 2 Vs THA 2 - 9
- Selectin vs Integrins - 10
- Stable tissue regeneration - 10
- Wound healing causes of delay - 11
- Wound healing components required - 11



CONTENTS

CHAPTER 3 HEMATOPATHOLOGY

- Eosinophilia causes - 13
- Condition associated with Basophilic Stippling - 13
- Causes of high ESR - 14
- Acute Intermittent Porphyria - 15
- Bernard Soulier disease - 15
- Fetal erythropoiesis - 16
- Folate deficiency causes - 16
- First detection of Haemoglobin - 17
- High reticulocyte count is seen in - 17
- Leukemia signs and symptoms - 18
- Kawasaki disease features - 18
- Leukocyte extravasation unique picture - 19
- Low reticulocyte count is seen in - 19
- Lymphocyte vs Neutrophil - 20
- Macrocytic anemia causes - 20
- Megaloblastic anemia causing drugs - 21
- PT vs APPT - 21
- Thrombocytopenia causes - 22
- Microcytic anemia - 22
- Sickle cell anemia 1 - 23
- Sickle cell anemia 2 - 23
- Target cells are seen in - 24
- Sideroblastic anemia causes - 24
- Total iron binding capacity (TIBC) - 25
- Thrombotic Thrombocytopenic Purpura (TTP) - 25
- WBC count - 26



CONTENTS

CHAPTER 4 GENETICS

- Autosomal Dominant diseases - 28
- Autosomal recessive diseases - 28
- X-linked recessive diseases - 29
- Chromosome 15 diseases - 29
- Anderson and Cori disease - 30
- Angelman syndrome features - 30
- Angelman syndrome unique illustration - 31
- Z DNA vs B DNA - 31
- Glycogen storage diseases - 32
- Hunter syndrome - 32
- Lysosomal storage disease - 33
- Mitochondrial inheritance diseases - 33
- Metabolic disorders other than autosomal recessive inheritance - 34
- Niemann pick disease - 34
- Tay-sachs disease - 35
- Tay-sachs disease unique picture - 35
- Down syndrome features - 36

CHAPTER 5 NEOPLASIA

- Bone metastasis primary organs - 38
- BRCA-1 gene association with other malignancies - 38
- Liver metastasis primary organs - 39
- Lymphatic spread of sarcoma - 39
- Breast cancer risk assessment - 40
- Cancer metastasis - 40



CONTENTS

CHAPTER 6 CARDIOVASCULAR SYSTEM

- Coronary artery disease risk factors - 42
- Causes of new onset atrial fibrillation - 43
- Acute MI treatment - 43
- Aneurysm types - 43
- Anti-arrhythmics for AV nodes - 44
- Aortic dissection risk factors - 44
- Aortic regurgitation causes 1 - 45
- Aortic regurgitation causes 2 - 45
- Aortic stenosis characteristics - 46
- Atherosclerosis risk factors - 46
- Beck's triad (cardiac tamponade) - 47
- Myxoma vs Rhabdomyoma - 48
- Dilated cardiomyopathy etiologies - 48
- Heart failure causes - 49
- Kawasaki disease unique picture - 49
- Bacterial endocarditis unique picture - 50
- Bacterial endocarditis - 50
- Kawasaki disease features - 51
- Lab results suggesting endocarditis - 51
- MI complications - 52
- Patau syndrome - 52
- Patau syndrome unique picture - 53
- Patau syndrome trisomy - 54
- Pericarditis causes - 54
- R-L & L-R shunts - 55



CONTENTS

CHAPTER 6 CARDIOVASCULAR SYSTEM

- Raised JVP differential - 55
- Restrictive/infiltrative cardiomyopathy - 56
- Rheumatic fever - 56
- Right to left shunts - 57
- Immediate treatment of myocardial infarction - 57
- Right to left shunt - 58
- Angina precipitating factors - 58
- Secondary hypertension causes - 59
- Syncope CVS causes - 59
- Syncope vascular causes - 60
- Tetralogy of fallot unique picture - 60
- Tetralogy of fallot - 61
- Turner syndrome - 61
- Valve movement - 62
- Vasculitis causing granuloma - 62

CHAPTER 7 LIVER PATHOLOGY

- Charcot's triad - 64
- Chronic liver failure signs - 64
- Cirrhosis differential common and rare - 65
- Conditions where Mallory hyaline bodies are seen in - 65
- Decompensating chronic liver failure d/d - 66
- Elevated bilirubin common causes - 66
- Gilbert, criggler najjar, dubin Johnson, rotor syndromes - 67
- Hepatic encephalopathy - 67
- Risk factors of cholangiocarcinoma - 68



CONTENTS

CHAPTER 8 RENAL PATHOLOGY

- Acute renal failure detection - 70
- Alport syndrome unique picture - 70
- IgA nephropathy (berger disease) - 71
- Chronic renal failure presentations - 71
- Hematuria urethral causes - 72
- Kidney enlargement causes - 72
- Nephrotic syndrome - 73
- Nephrotic syndrome features - 73
- Papillary necrosis causes - 74
- Polycystic kidney disease - 74

CHAPTER 9 LUNG PATHOLOGY

- Pneumonia complications - 76
- ARDS causes - 76
- Bronchial obstruction consequences - 77
- Dyspnoea 6 P's - 77
- Emphysema vs Chronic bronchitis - 78
- Epiglottitis - 78
- Interstitial lung disease causes - 79
- Kartagener syndrome - 79
- Lung cancer complications - 80
- Acute pneumonia causes - 80
- Pulmonary embolism risk factors - 81
- Pulmonary fibrosis d/d - 81
- Respiratory distress syndrome in infants - 82
- Sputum findings in asthma - 82
- Tension pneumothorax signs and symptoms - 83
- Wheezing causes - 83



CONTENTS

CHAPTER 10 GASTROINTESTINAL PATHOLOGY

- Abdominal pain causes during pregnancy - 85
- Causes of abdominal swelling - 85
- Ascites causes - 86
- Dysphagia causes - 86
- Gastric carcinoma risk factors - 87
- GI bleeding causes - 87
- Insulin dependent glucose uptake - 88
- Leptin vs Ghrelin - 88
- Acute pancreatitis causes - 89
- Pancreatitis ranson criteria admission time - 89
- Pancreatitis ranson criteria initial 48 hours - 90
- Peptic ulcer associated causative factors - 90
- Peptic ulcer - 91
- Pyloric stenosis unique picture - 91
- Pyloric stenosis - 92
- Causes of vomiting - 92
- Somatostatin vs Somatomedin - 93
- Gastric ulcer vs Duodenal ulcer - 93
- Ulcerative colitis - 94
- Zenker's diverticulum - 94

CHAPTER 11 GENITAL SYSTEM AND BREAST

- Endometrial cancer risk factors - 96
- Genital cysts - 96
- Polycystic ovarian disease (PCOD) - 97



CONTENTS

CHAPTER 12 CNS PATHOLOGY

- Horner's syndrome - 99
- Argyll Robertson pupil - 99
- Autism - 100
- Balint's syndrome - 100
- Bell's palsy symptoms - 101
- Signs of cerebellar damage - 101
- Cerebellopontine angle tumors - 102
- Chorea common causes - 102
- Decrease level of consciousness metabolic causes - 103
- Dandy walker malformation - 103
- Horner syndrome unique picture - 104
- Meniere's disease - 104
- Parkinson's disease - 105
- Normal pressure hydrocephalus - 105
- Seizure causes - 106
- Subarachnoid haemorrhage causes - 106
- Syncope CNS causes - 107
- Syncope CVS causes - 107
- Syncope vascular causes - 108

CHAPTER 13 MUSCULOSKELETAL SYSTEM

- Carpal tunnel syndrome - 110
- Becker muscular dystrophy - 110
- Congenital myopathy features - 111
- Duchenne muscular dystrophy - 111



CONTENTS

- Ectopia lentis - 112
- Genu valgum vs Genu varum - 112
- Marfan syndrome features - 113
- Osteogenesis imperfecta - 113
- Osteogenesis imperfecta unique picture - 114
- Osteonecrosis causes - 114
- Paget's disease - 115
- Reactive arthritis causative agents - 115
- Reactive arthritis - 116
- Scoliosis vs Kyphosis - 116
- Rheumatoid arthritis unique picture - 117

CHAPTER 14 ENDOCRINOLOGY

- Acromegaly symptoms - 119
- Addison's disease vs Cushing syndrome - 119
- Addison's disease causes - 120
- Adrenal crisis management - 120
- Adrenal insufficiency causes - 121
- Cretinism vs Myxoedema - 122
- Cushing syndrome - 122
- Diabetes mellitus unique picture - 123
- Diabetes complications - 123
- Follicular carcinoma - 124
- Glucagonoma signs & symptoms - 124
- Grave's disease - 125
- Hirsutism & Virilism - 125
- Hormones decrease in stress - 126
- Hormones with intracellular receptors - 126
- Hyperthyroidism signs & symptoms - 127
- Insulinoma rule of 10's - 127



CONTENTS

- Medullary carcinoma of thyroid - 128
- MEN 1 syndrome - 128
- Osteoporosis causes - 129
- Pancreatic hormones - 129
- Papillary thyroid tumor - 130
- Pheochromocytoma - 130
- Pheochromocytoma 10% rule - 131
- Psammoma bodies - 131
- Rickets clinical features - 132
- Carcinoid syndrome - 132
- Thyroid carcinoma histologic types - 133
- Thyroid neoplasms - 133

CHAPTER 15

MISCELLANEOUS

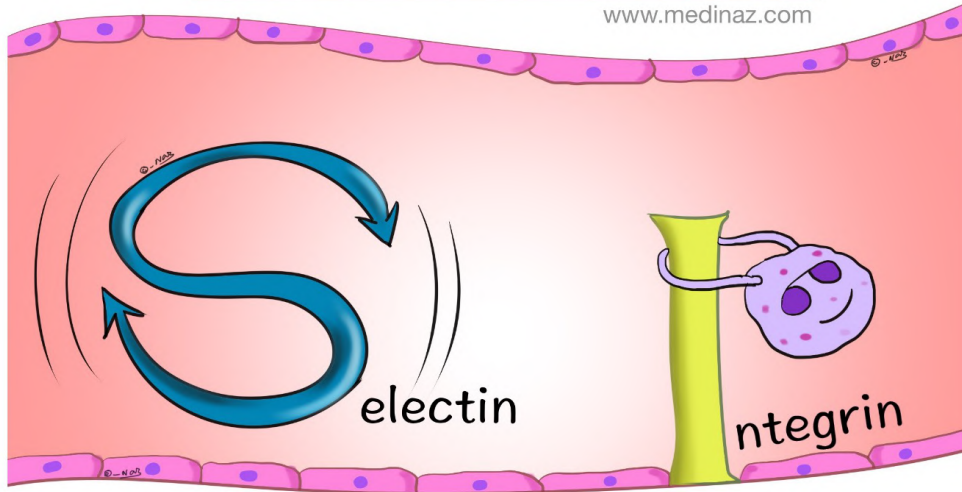
- Anion gap causes - 135
- Midgut carcinoid tumors - 135
- Epidermoid vs Sebaceous cyst - 136
- Rhabdomyoma vs Sq.cell carcinoma - 136
- Lung carcinoma most common - 137
- Lymph nodes of head & neck - 137
- Metabolic acidosis causes - 138
- Non gap acidosis causes - 138
- Pierre robin syndrome - 139
- Multiple myeloma - 139

Selectins Vs Integrins

Selectins are responsible for Rolling

Integrins are required for Adhesion

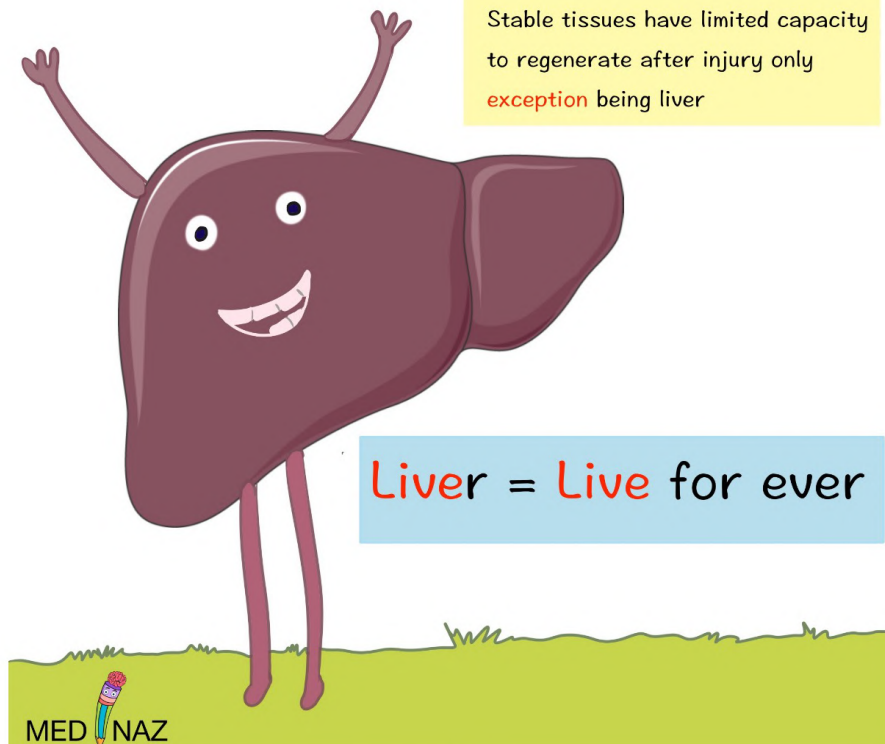
www.medinaz.com



Stable tissue Regeneration

www.medinaz.com

Stable tissues have limited capacity to regenerate after injury only
exception being liver



MED NAZ

MED NAZ

Glycogen Storage Diseases

www.medinaz.com

- Type I (Von Gierke disease)
- Type II (Pompe's disease, acid maltase deficiency)
- Type III (Cori's disease)
- Type IV (Andersen's disease)
- Type V (McArdle's disease)
- Type VI (Hers' disease)
- Type VII (Tarui's disease)

“Vo Physics Chemistry Aur
Maths main Hoshiyaar Tha”



Hunter Syndrome

www.medinaz.com

“Hunter has an aXe / X”
(X-linked recessive)



MED NAZ

Insulin-independent glucose uptake

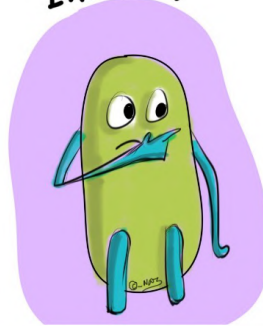
www.medinaz.com

- B**rain
- R**BCs
- I**ntestine
- C**ornea
- K**idney
- L**iver
- I**slet (β) cells
- P**lacenta
- S**permatocytes

“BRICK LIPS”



Insulin



Leptin vs Ghrelin

www.medinaz.com

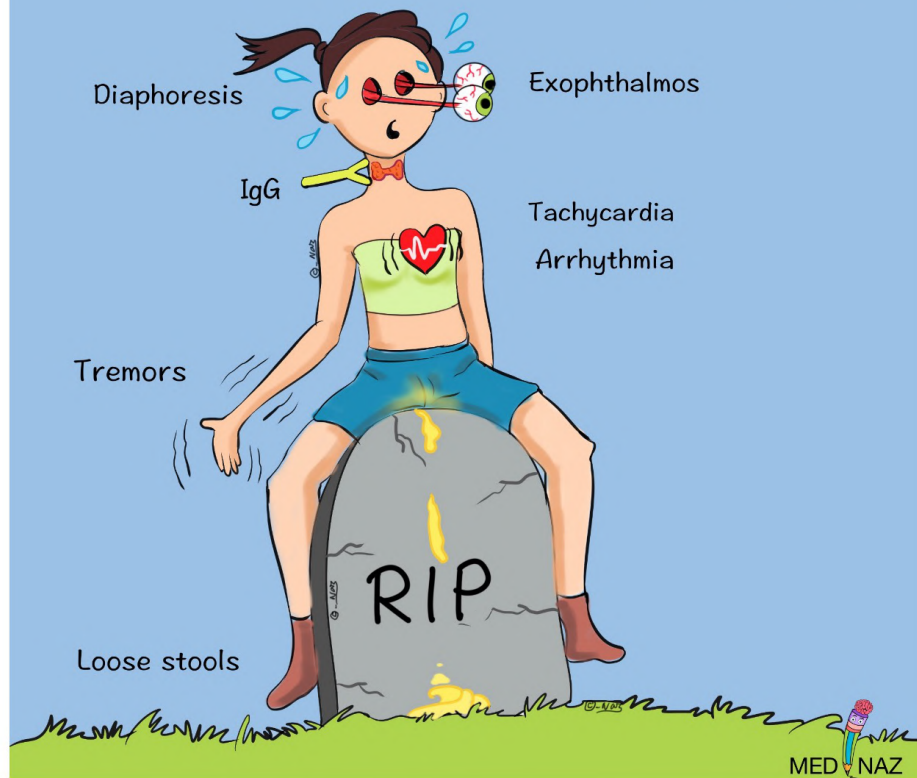
Leptin keeps you thin

Ghrelin makes you hungry and grow (grow)



GRAVES' DISEASE

www.medinaz.com



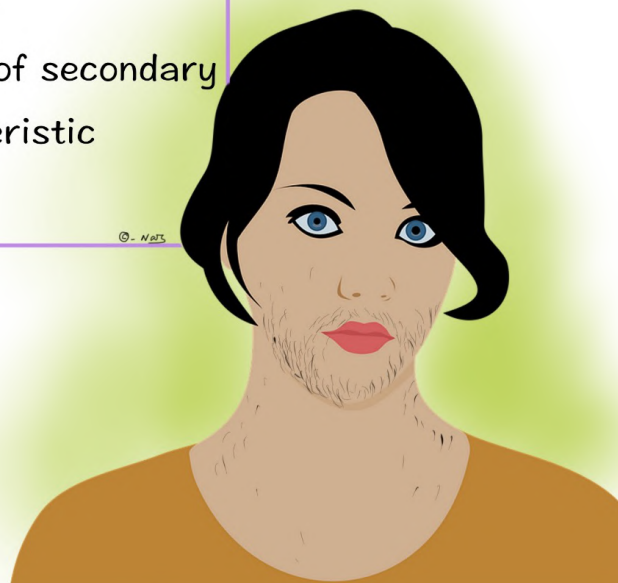
www.medinaz.com

Hirsutism


Hair on body like a male

Virilism

Voice & rest of secondary sexual characteristic like a male



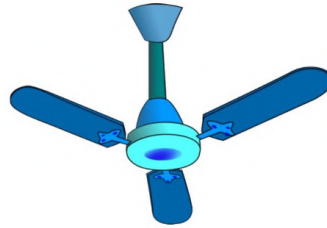
Ectopia Lentis

www.medinaz.com 

mar**FAN** syndrome

FAN is up
Superior dislocation

© - MEDS



homocystin**URIA**

URINE goes down
Inferior dislocation


© - MEDS



weill-**MARCH**esani syndrome

we will **MARCH** forward
Anterior dislocation

© - MEDS

 naz_artonomy



GENU VAL**GUM** vs GENU VAR**UM**

www.medinaz.com

“**GUM**” makes your knees
stick together

“**RUM**” makes your knees
spread apart

© - MEDS

