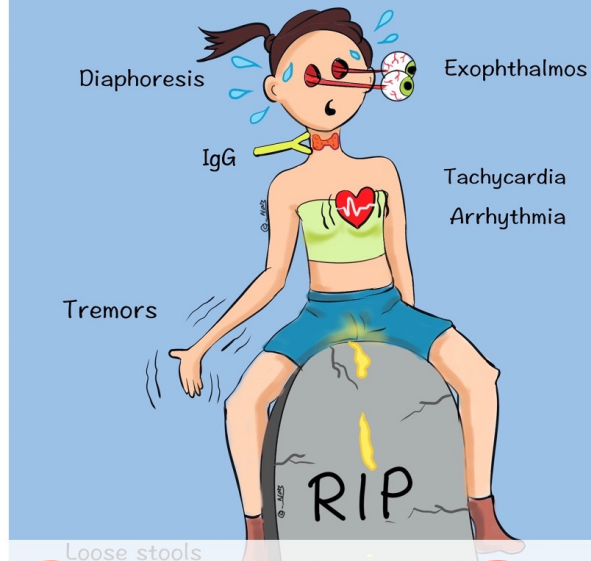


# Migraine



# GRAVES' DISEASE

[www.medinaz.com](http://www.medinaz.com)



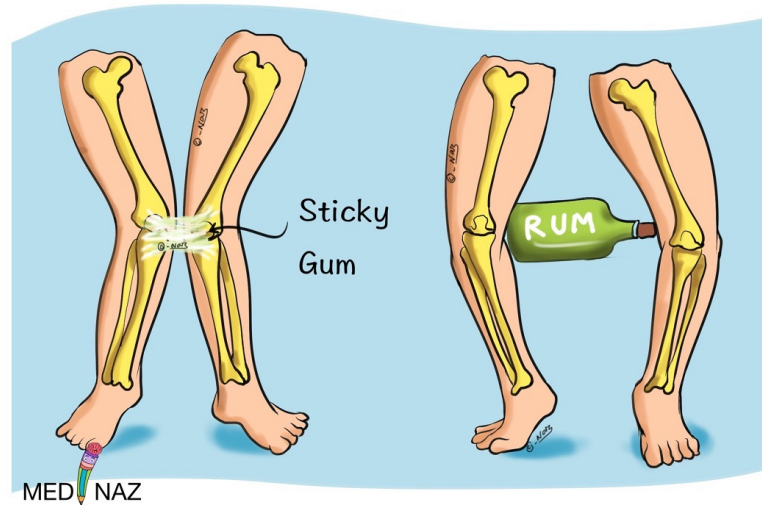
## SAMPLE CONTENTS

## GENU VALGUM vs GENU VARUM

[www.medinaz.com](http://www.medinaz.com)

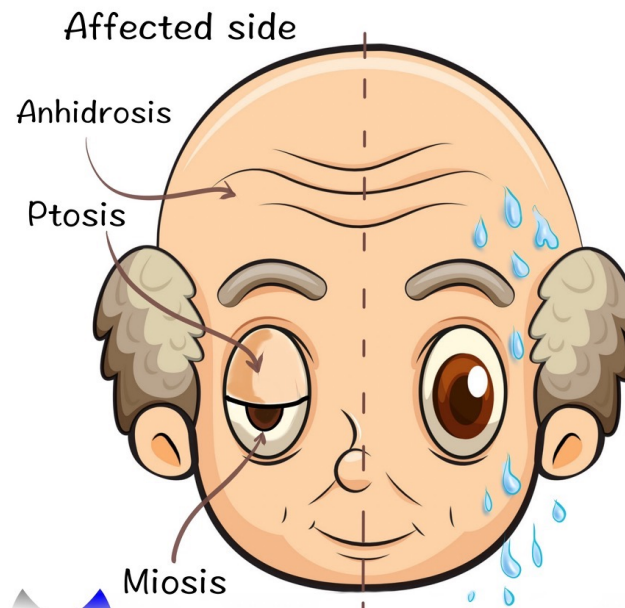
**"GUM"** makes your knees stick together

**"RUM"** makes your knees spread apart



## Horner syndrome

[www.medinaz.com](http://www.medinaz.com)



# Alport Syndrome

www.medinaz.com

Sensorineural deafness



"can't see, can't pee,  
can't hear a bee."

lens dislocation

Most commonly

X-linked dominant

Mutation in  
type IV collagen

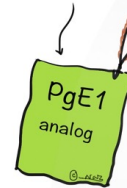
"Basket-weave appearance"  
under Electron microscope

MED NAZ

# Misoprostol

www.medinaz.com

Prostaglandin E1  
analog



Maintain patency of  
Ductus arteriosus

Most specific drug  
for NSAIDs induced  
gastric ulcer

Cause diarrhoea &  
abdominal cramp

Used for  
medical abortion

## SAMPLE CONTENTS

# Phenytoin

www.medinaz.com

Diplopia

Gum hyperplasia

Bleeding tendency

Teratogenic

Osteomalacia

Na<sup>+</sup> Channel blocker

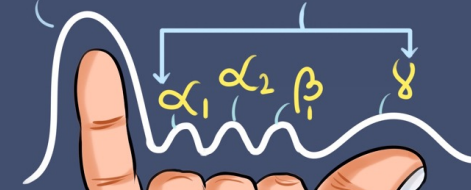
MED NAZ

## EASY WAY TO REMEMBER Serum Protein Electrophoresis

www.medinaz.com

Albumin

Globulins



MED NAZ

Follow  
medinaz\_academy

## Topoisomerase

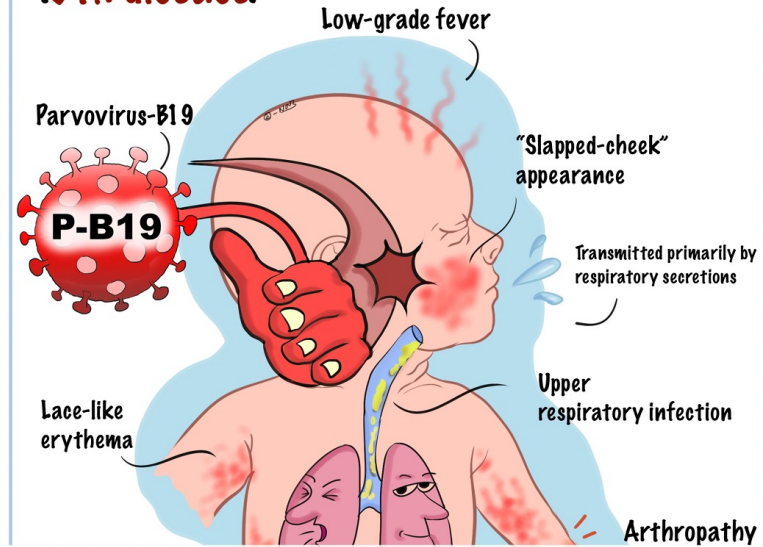
**Topoisomerase:** A class of enzymes that alter the supercoiling of double-stranded DNA. The topoisomerases act by transiently cutting one or both strands of the DNA. **Topoisomerase type I** cuts one strand whereas **topoisomerase type II** cuts both strands of the DNA to relax the coil and extend the DNA molecule.



MED NAZ

## Erythema Infectiosum (5th disease)

www.medinaz.com

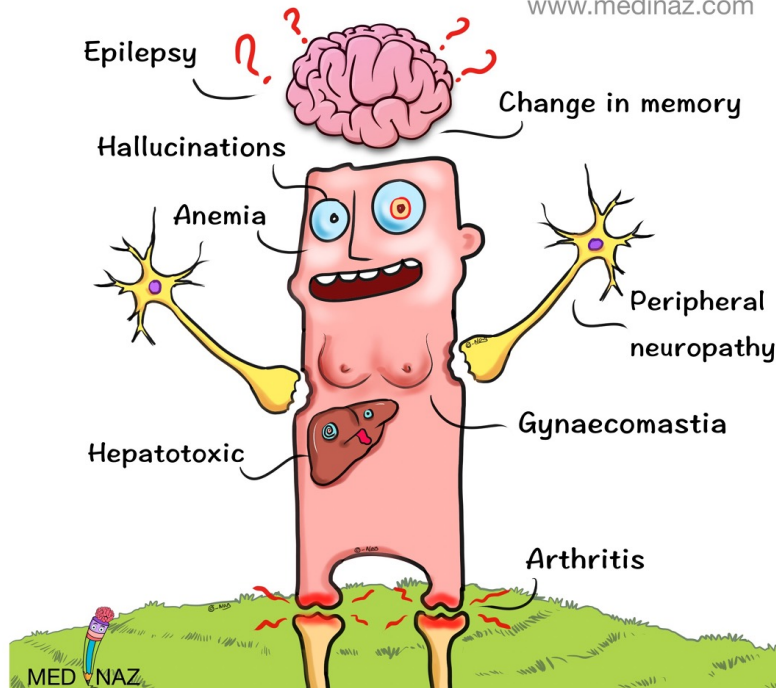


Follow  
medinaz\_academy

# SAMPLE CONTENTS

## Isoniazid Side-effects

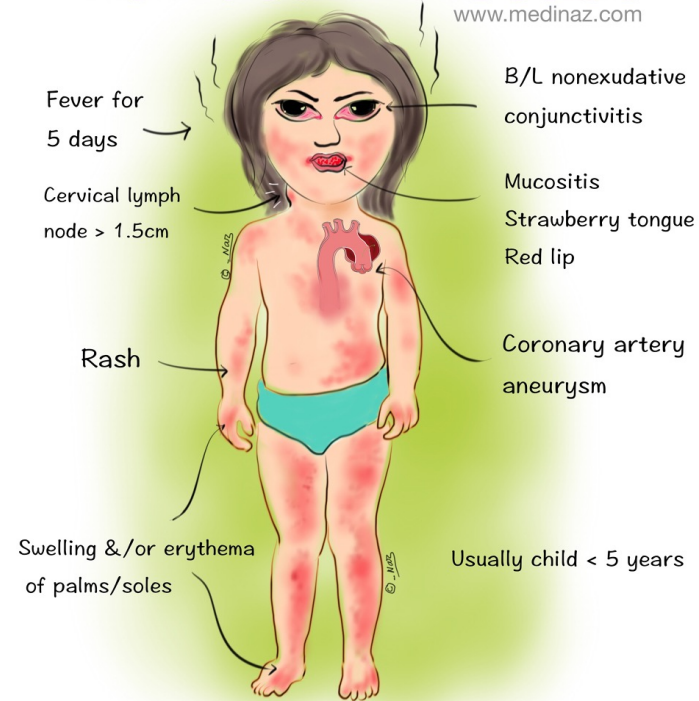
www.medinaz.com



MED NAZ

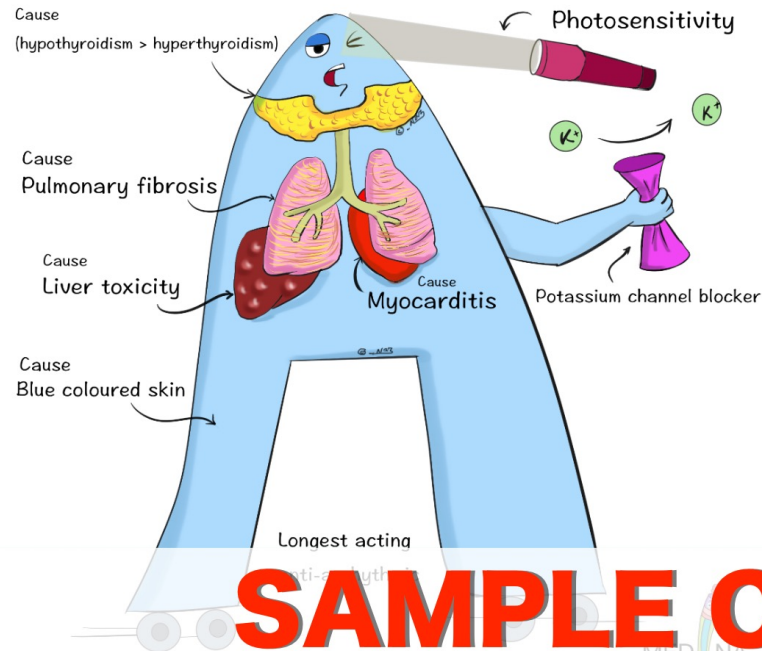
## Kawasaki Disease

www.medinaz.com



# Amiodarone

www.medinaz.com



# Misoprostol Pharmacology

www.medinaz.com

Mis O Pro Sto L

Mis  
carriage

Open  
PDA

Protect stomach against  
NSAIDs

Contraindicated in women of  
childbearing potential  
(abortifacient)

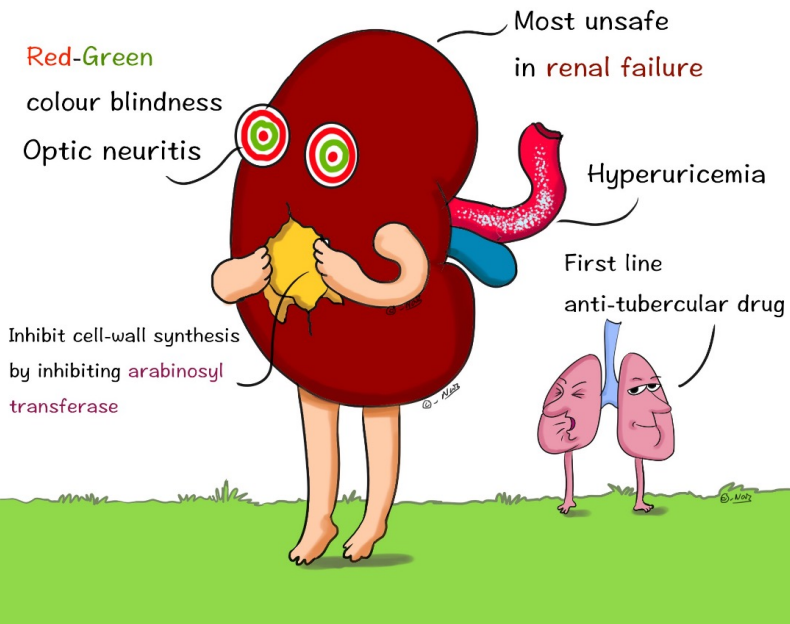
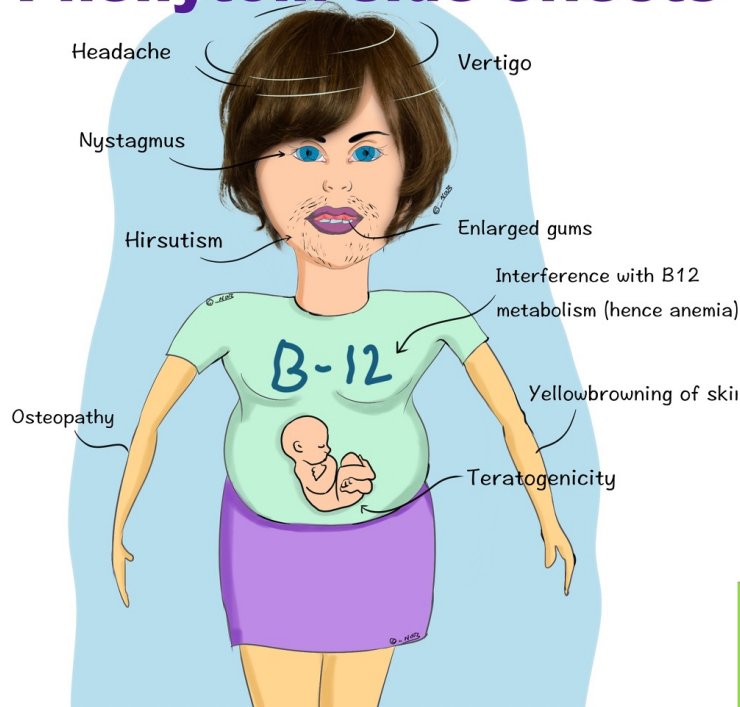
PGE1 analog  
Increase production and secretion  
of gastric mucous barrier,  
Decrease acid production.



# SAMPLE CONTENTS

# Ethambutol

# Phenytoin side-effects



## Glycogen storage disease

www.medinaz.com

### types

- Von Gierke's - type I
- Pompe's - type II
- Cori's - type III
- Anderson's - type IV
- McArdle's - type V
- Her's - type VI

"Viagra Pills Cause  
A Major Hardon"



### Amino acids necessary for purine synthesis

www.medinaz.com



### De novo Pyrimidine & Purine synthesis

- > Ribonucleotides are synthesised first and are converted to deoxyribonucleotides by Ribonucleotide reductase
- > Carbamoyl phosphate is involved in 2 metabolic pathways: de novo pyrimidine synthesis and Urea cycle
- > Ornithine transcarbamoylase deficiency (OTC, key enzyme of urea cycle) leads to an accumulation of carbamoyl phosphate, which is then converted to orotic acid

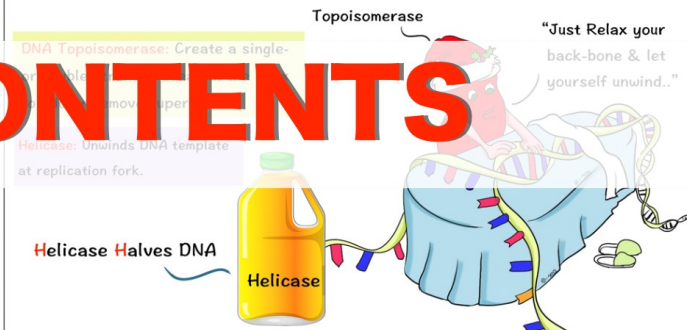
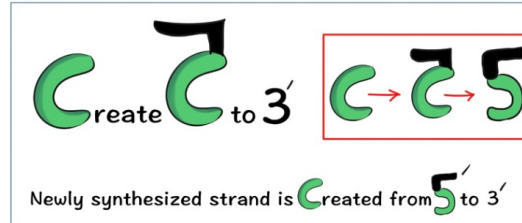
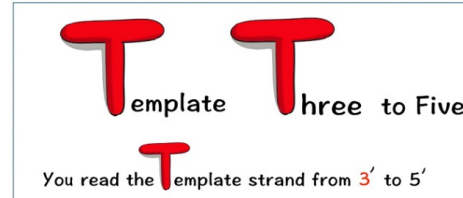


"CUP"

Carbamoyl phosphate  
Urea cycle  
de novo Pyrimidine synthesis

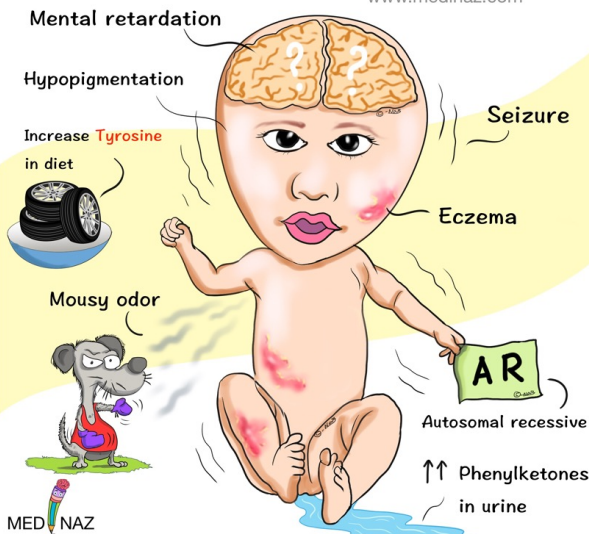
## DNA Replication:

In both prokaryotes and eukaryotes, DNA replication is semiconservative, involves both continuous and discontinuous (Okazaki fragment) synthesis, and occurs in the 5' 3' direction.



## Phenylketonuria

www.medinaz.com

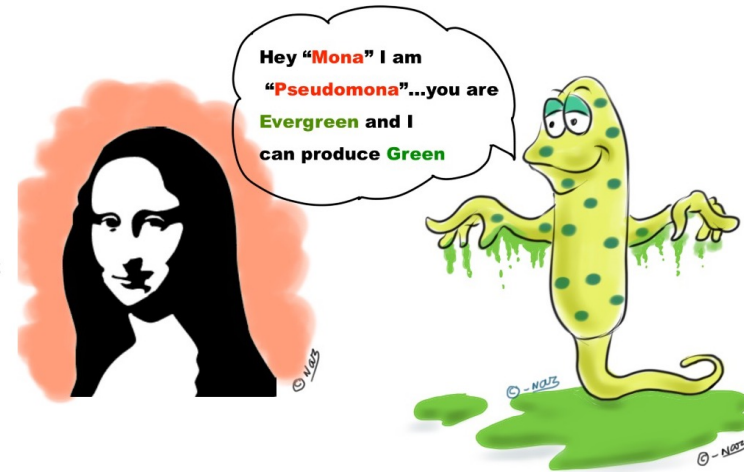


# Klebsiella

www.medinaz.com



# Pseudomona

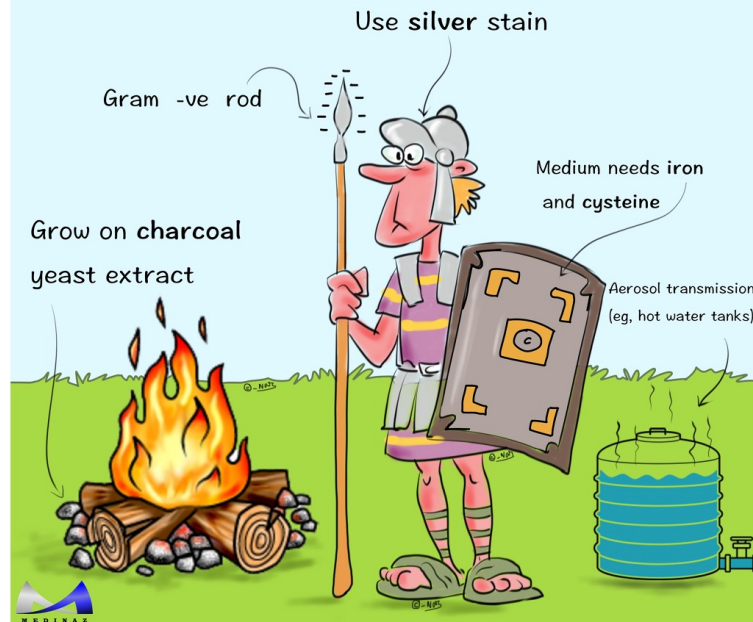


**Pseudomona aeruginosa**

## SAMPLE CONTENTS

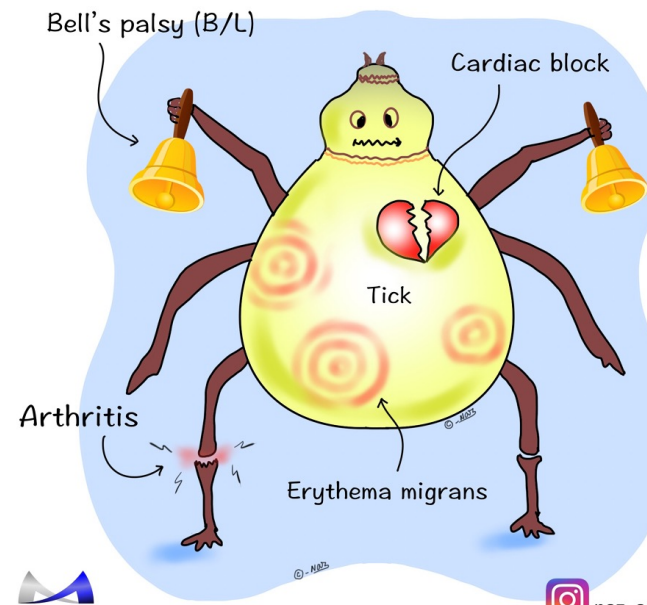
# Legionella pneumophila

www.medinaz.com



# Lyme Disease

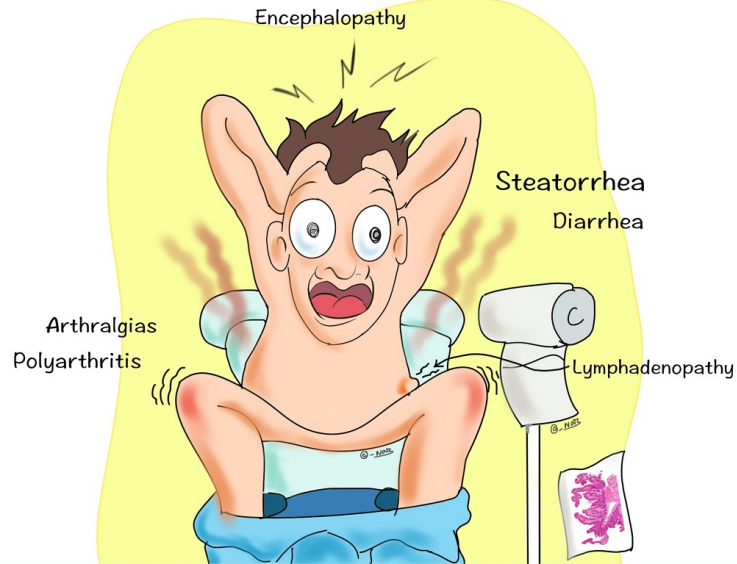
www.medinaz.com



# Whipple's Disease

www.medinaz.com

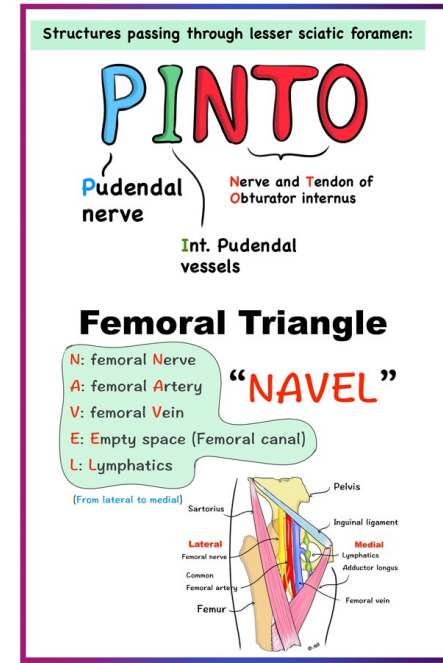
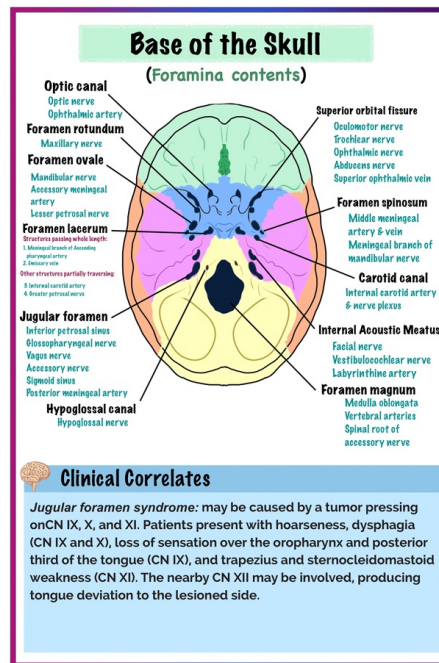
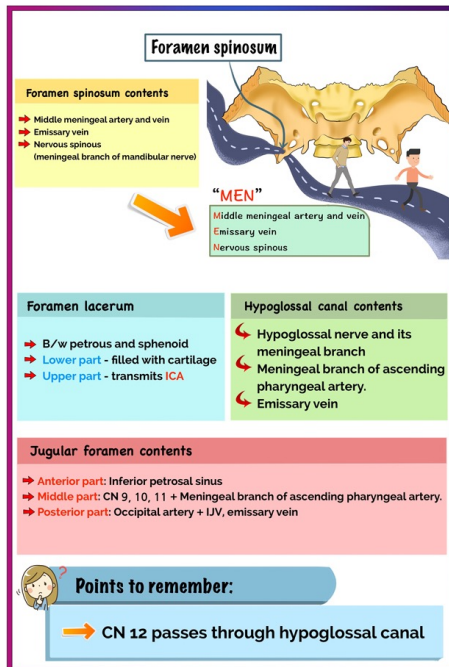
# Ball & Socket Joints



**Shoulder**  
**Hip**  
**Incudostapedial**  
**Talonavicular**



## SAMPLE CONTENTS



# Crohn's Disease

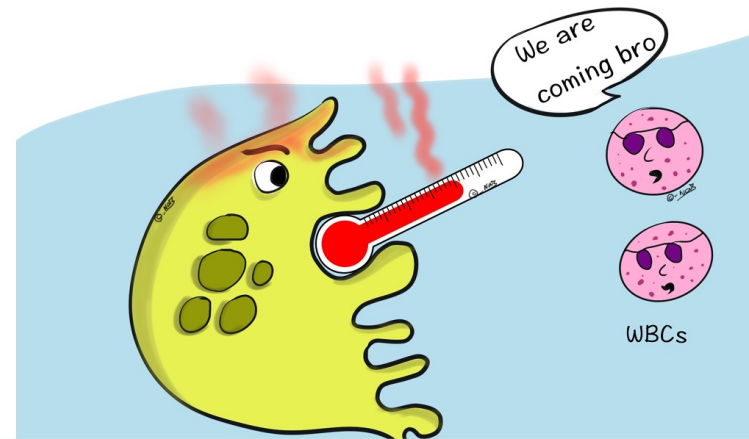
www.medinaz.com

- S** - Skip lesions
- I** - Ileum (MC affected site)
- S** - Saccharomyces cerevisiae antibody present
- T** - Transmural involvement
- E** - Extra fibrosis and fistula formation (compared to UC)
- R** - Radiological signs - String sign of Kantor, Rectum is usually spared

"Corn SISTER"



# IL-



## SAMPLE CONTENTS

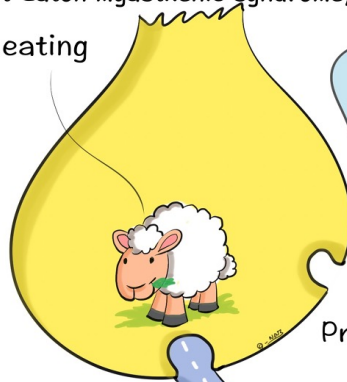


### Myasthenia Gravis Vs Lambert Eaton

www.medinaz.com

(Lambert-Eaton myasthenic syndrome)

Lamb eating



**Lambert-Eaton myasthenic syndrome**  
Autoantibodies to presynaptic Ca<sup>2+</sup> channel

**Myasthenia gravis**  
Autoantibodies to postsynaptic ACh receptor

Pre-synaptic area

Myasthenia gravis (Graves)

Post-synaptic area



### Bruton agammaglobulinemia

www.medinaz.com

X-linked recessive  
(MOSTLY in Boys)

Defect in **BTK** gene  
(tyrosine kinase gene)

Recurrent bacterial and enteroviral infections

Bad tyre

No B-cell maturation

