



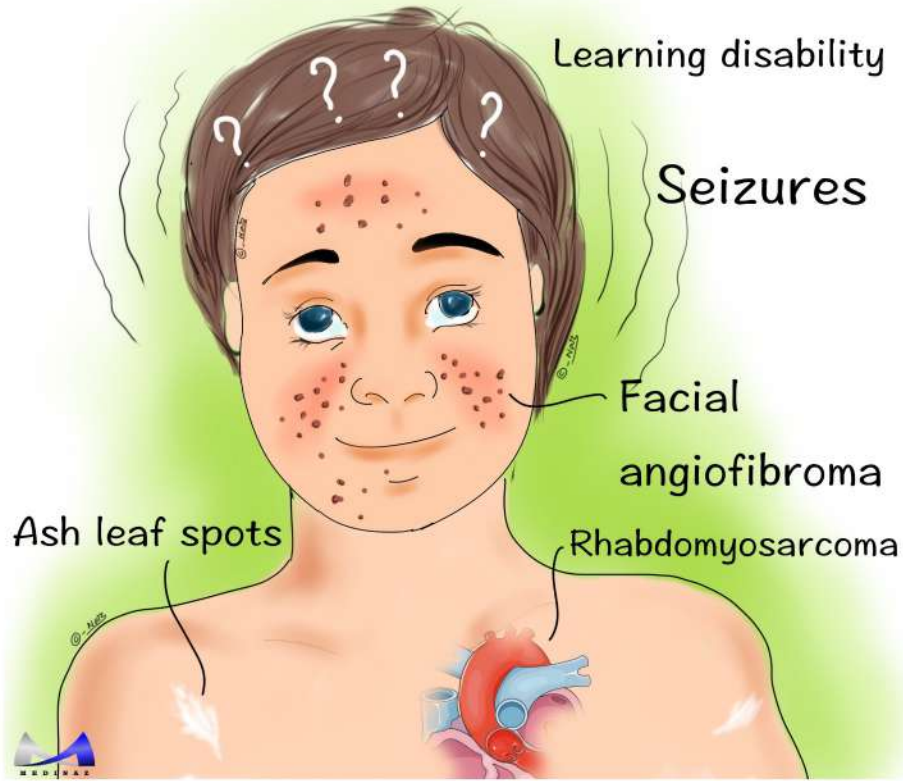
INDEX

- Cardiovascular system
- Endocrine system
- Gastroenterology
- Haematology
- Infectious diseases
- Integumentary system
- Liver and Biliary system
- Musculoskeletal system
- Nervous system
- Psychiatry
- Renal system
- Reproductive system
- Respiratory system
- Drug of choice
- FDA approved drugs 2019



Tuberous Sclerosis

www.medinaz.com

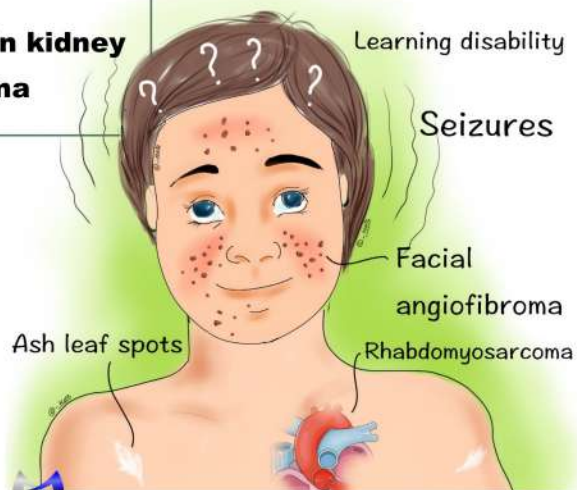


Tuberous Sclerosis

www.medinaz.com

- Ash leaf spots**
- Shagreen patches**
- Heart rhabdomyosarcoma**
- Lung hamartomas**
- Epilepsy**
- Angiomyolipoma in kidney**
- Facial angiofibroma**

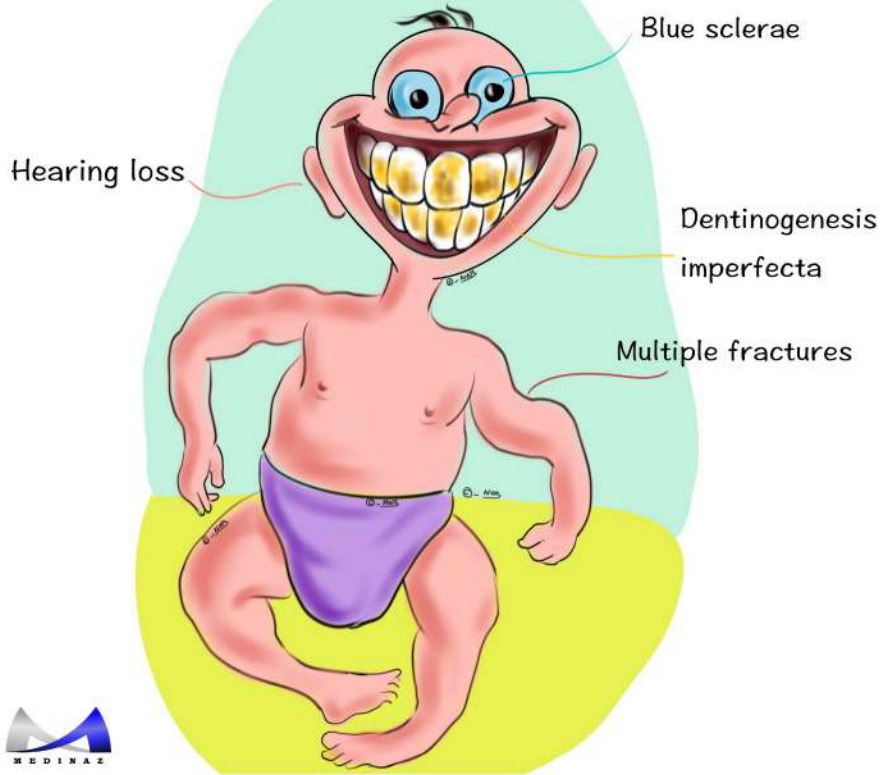
“ASH LEAF”





Osteogenesis Imperfecta

www.medinaz.com

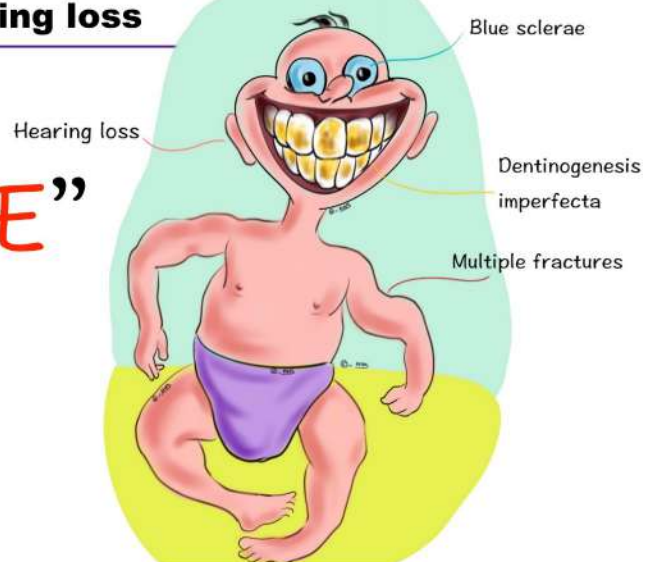


Osteogenesis Imperfecta

www.medinaz.com

Bones = multiple fractures
I (eye) = blue sclerae
Teeth = dental imperfections
Ear = hearing loss

“**BITE**”

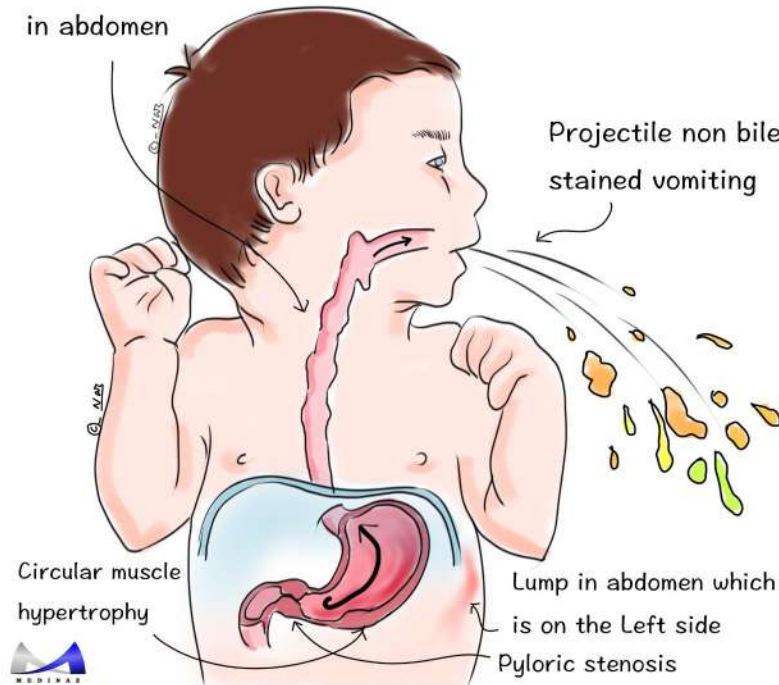




Pyloric Stenosis

www.medinaz.com

Visible peristalsis
in abdomen



Pyloric Stenosis

www.medinaz.com

Peristalsis (Visible peristalsis in abdomen)

Yuck! So the kid vomits everything he eats (non bile stained vomiting)

Lump in abdomen which is on the Left side

Olive mass, Doughnut sign on USG

Ramstedt's pyloromyotomy (treatment)

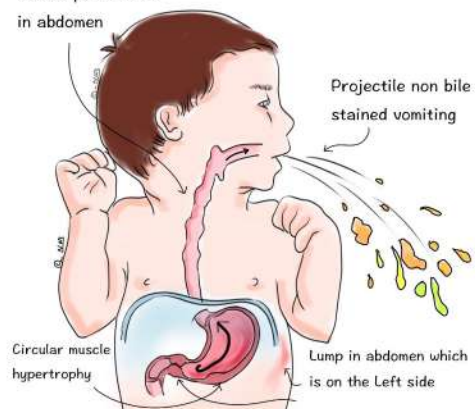
Imbalance of electrolytes

Circular muscle hypertrophy

“PYLORIC”



Visible peristalsis
in abdomen





Kawasaki Disease

www.medinaz.com

Apply "Warm CREAM" in
Kawasaki disease

Warm = **F**ever >5 days
C = **C**onjunctivitis (non-exudate)
R = **R**ash
E = **E**dema / **E**rythema of
hands & feet
A = **A**denopathy cervical
M = **M**ucositis, strawberry
tongue



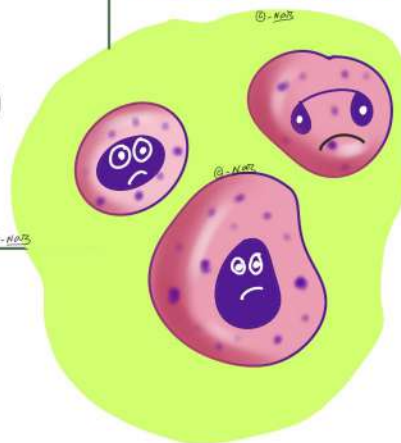
 naz_artonomy

Leukaemia signs & symptoms

www.medinaz.com

Light skin (pallor)
Enlarged spleen, liver lymph nodes
Underweight
Kidney failure
Excess heat (fever)
Mottled skin (haemorrhage)
Infections
Anaemia

"LEUKEMIA"





Congenital myopathy features

www.medinaz.com

- Dominantly inherited
- Reflexes decreased
- Enzymes normal
- Apathetic floppy baby
- Milestones delayed



“DREAM”



Duchenne Muscular Dystrophy

www.medinaz.com

Age: 3-6 years

Shoulders and arms are held back awkwardly when walking

Sway back

Weak butt muscles

Pseudohypertrophy of calf muscles

Tight heel cord

Belly sticks out due to weak belly muscles

Poor balance falls often

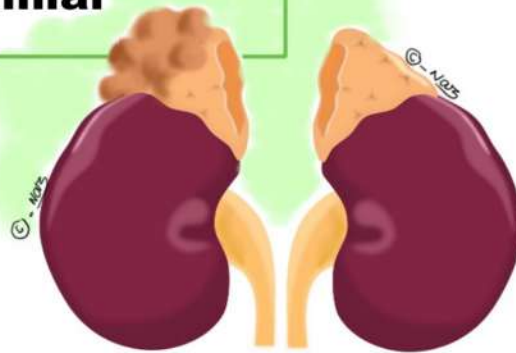
walking on toes





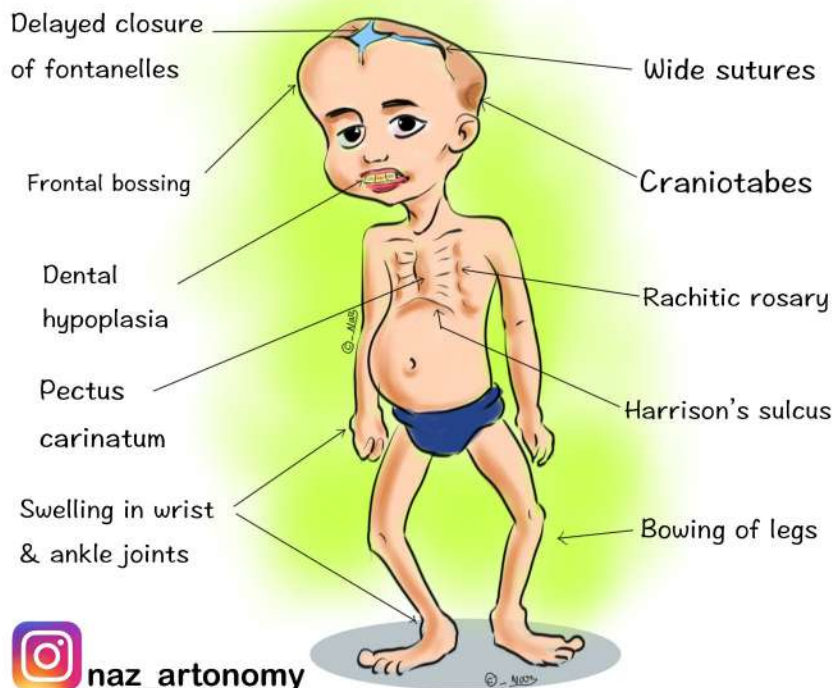
10% Rule of PHEOCHROMOCYTOMA

- 10% extra-adrenal**
- 10% bilateral**
- 10% malignant**
- 10% in children**
- 10% familial**



Rickets Clinical Features

www.medinaz.com





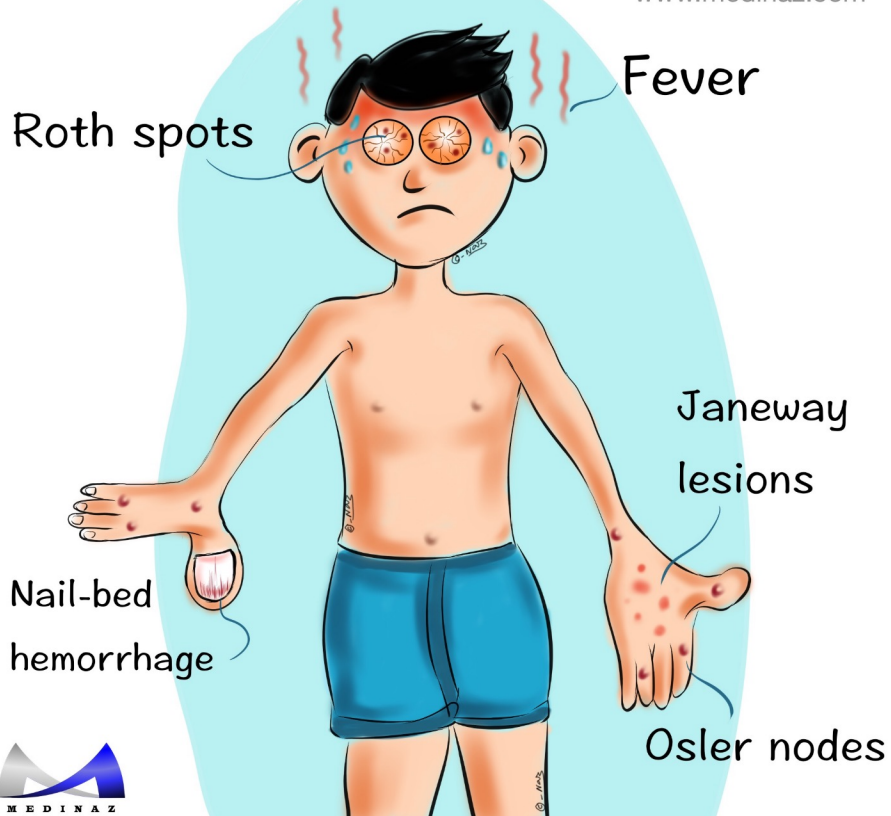
INDEX

- **Cardiac Anatomy & Embryology**
- **Cardiac Physiology**
- **Cardiac Pharmacology**
- **Cardiac Pathology**
- **Cardiac Medicine**
- **Cardiac Surgery**
- **Cardiac Drug of choice**
- **Cardiac New drugs highlight**



Bacterial Endocarditis

www.medinaz.com

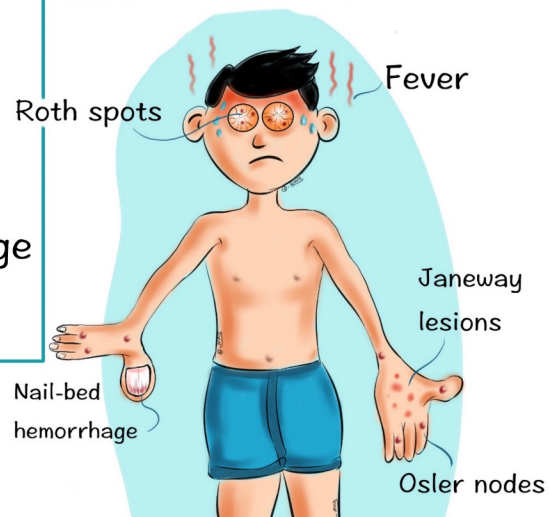


Bacterial Endocarditis

www.medinaz.com

- Fever
- Roth spots
- Osler nodes
- Murmur
- Janeway lesions
- Anemia
- Nail-bed hemorrhage
- Emboli

“FROM JANE”

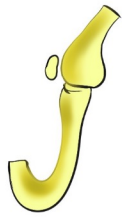




Rheumatic Fever

(Major criteria)

www.medinaz.com



Joint (migratory polyarthritis)



Carditis



Nodules in skin (subcutaneous)



Erythema marginatum



Sydenham chorea

Rheumatic Fever: Minor criteria

www.medinaz.com

- CRP
- Arthralgia
- Fever
- Elevated ESR
- Prolonged PR interval
- Anamnesis Rheumatism
- Leukocytosis

“CAFE PAL”





BETA BLOCKER MEMBERS



T he	→	T imolol
N	→	N adolol
E	→	E smolol
P	→	P indolol
A	→	A tenolol
L	→	L abetalol
Prime	→	P ropranolol
Minister	→	M etoprolol

Drugs cause Torsades de pointes



A miodarone
P rocainamide
A rsenium
C isapride
H aloperidol
E rythromycin

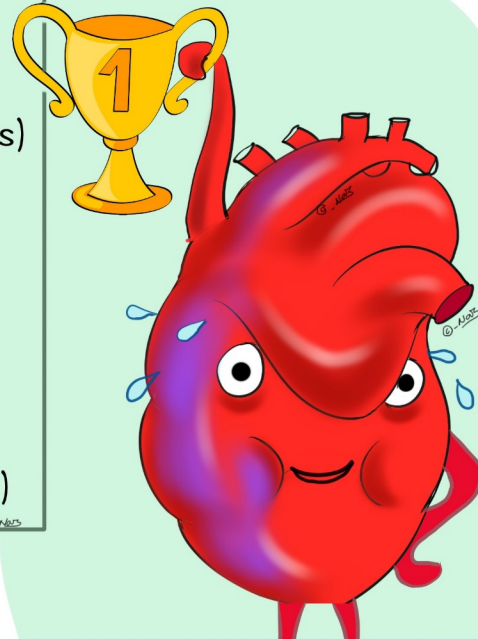


Optimizing RV Function

www.medinaz.com

“CHAMPIONS”

- CO₂ (blow off)
- Heme (optimize Hgb)
- Acid-base (correct acidosis)
- MCS (if all else fails)
- Paralyse (after sedation)
- Inotropes (esp milrinone)
- Oxygenate
- Nitric oxide
- Sedation (before paralysis)



Reasons for Urgent CABG

(Coronary Artery Bypass Graft)

www.medinaz.com

- VSD
- Anatomy (e.g. Tight LM)
- Papillary muscle rupture
- Ongoing angina
- Rupture of LV free wall
- IABP dependence
- Shock
- Evolving MI

“VAPORISE”





Anticancer drugs

ALL regimen of choice – Vincristine, Prednisolone,
Asperginase, Daunorubicin

AML – Daunorubicin/Idarubicin + Cytarabine

Anal Ca – 5FU + Mitomycin

Bladder Ca – Cisplatin + Gemcitabine

Brain tumor – Temozolomide

Carcinoid tumors – Octreotide

Carcinomatous meningitis – Methotrexate (Intrathecal)

Cervical cancer – Methotrexate

CML – Imatinib

GIST - Imatinib

Hypereosinophilic syndrome - Imatinib

Dermatofibrosarcoma protuberans – Imatinib

Hairy cell leukemia – Cladribine

Hepatocellular carcinoma – Sorafenib

Kaposi sarcoma – Daunorubicin or Doxorubicin

BRAF negative malignant melanoma – PD-1 inhibitors
(Pembrolizumab/Nivolumab)

BRAF positive malignant melanoma – BRAF inhibitors
(Vemurafenib/Dabrafenib)

Mesothelioma – Pemetrexed

Paget's disease – Zoledronic acid

Pancreatic cancer – Gemcitabine

Waldenstrom macroglobulinemia – Rituximab



Anesthesia

Anesthetic agent of choice

Cerebral protection – Thiopental sodium

Raised ICT - Thiopental sodium

Status epilepticus - Thiopental sodium

Epilepsy - Thiopental sodium

Hyperthyroidism - Thiopental sodium

LSCS induction - Thiopental sodium

Electroconvulsive therapy – Methohexital

Day care surgery - Propofol

Total intravenous anesthesia – Propofol

Sedation in ICU – Propofol

Patients susceptible to malignant hyperthermia
– Propofol

Bronchial asthma induction agent - Ketamine

Status asthmaticus – Ketamine

Shock (hypovolemic, haemorrhagic, septic) – Ketamine

DIC – Ketamine

Cyanotic congenital heart diseases with right to left
shunt – Ketamine

Hypothyroidism – Ketamine

Old patients – Etomidate

Cardiovascular disorders (aneurysm, cardiomyopathy,
CHF, CAD, aortic stenosis) – Etomidate

Altered hemodynamic states – Etomidate