



# CONTENTS

- Innate immunity unique picture - 2
- Acute Phase Reactant proteins - 2
- Adaptive immunity unique picture - 3
- Herd immunity against vaccination - 3
- MHC molecule expression - 4
- MHC I vs MHC II molecules - 4
- MHC I vs MHC II molecular structure - 5
- B8 associated diseases - 5
- B27 associated diseases - 6
- HLA DR2 associated diseases - 6
- HLA DR3 associated diseases - 7
- T & B cell types - 7
- Subset of Helper T cells - 8
- NK cell activation - 8
- Immunoglobulin types - 9
- IgG is highest for - 9
- IgM is highest for - 10
- Histamine features - 10
- Complement system part 1 - 11
- Complement system part 2 - 11
- Interleukin 1 features - 12
- Interleukin 6 features - 12
- Interleukin 4 features - 13
- Interleukin 5 features - 13
- Interleukin 8 features - 14
- Hypersensitivity types - 14
- Type II hypersensitivity - 15
- Type III hypersensitivity - 15
- Type IV hypersensitivity - 16



SLE features 1	- 16
SLE features 2	- 17
SLE features 3	- 17
SLE criteria	- 18
Grave's disease unique picture	- 18
Guillain Barre syndrome	- 19
Crohn's disease	- 19
Edrophonium	- 20
Myasthenia gravis associated with	- 20
Myasthenia gravis associated with	- 21
Sjogren's syndrome diagnosis	- 21
CREST syndrome	- 22
Burton agammaglobulinemia	- 23
Selective IgA deficiency	- 23
Common variable immunodeficiency	- 24
DiGeorge syndrome	- 24
Hyper IgE syndrome (Job syndrome)	- 25
Ataxia - telangiectasia	- 25
Wiskott-Aldrich syndrome	- 26
Chediak-Higashi syndrome	- 26
Tuberous sclerosis unique picture	- 27
Tuberous sclerosis features	- 27
Killed vaccine	- 28
Live attenuated vaccine	- 28
B cell markers	- 29
Interleukins	- 29

## B27 associated diseases

**P**soriatic arthritis  
**A**nkylosing spondylitis  
**I**BD-associated arthritis  
**R**eactive arthritis

“**PAIR** of **B**oobs”



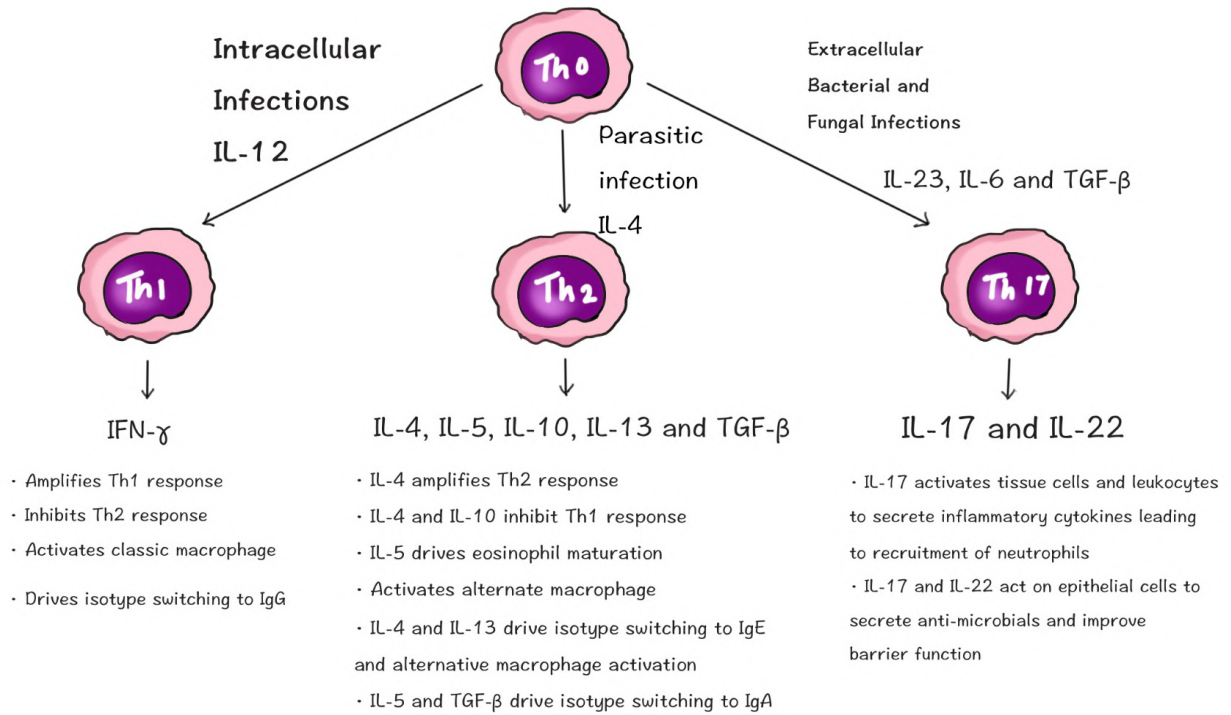
## HLA DR2

“**H**ey this **DR** is going  
**2** be **Good MS**”

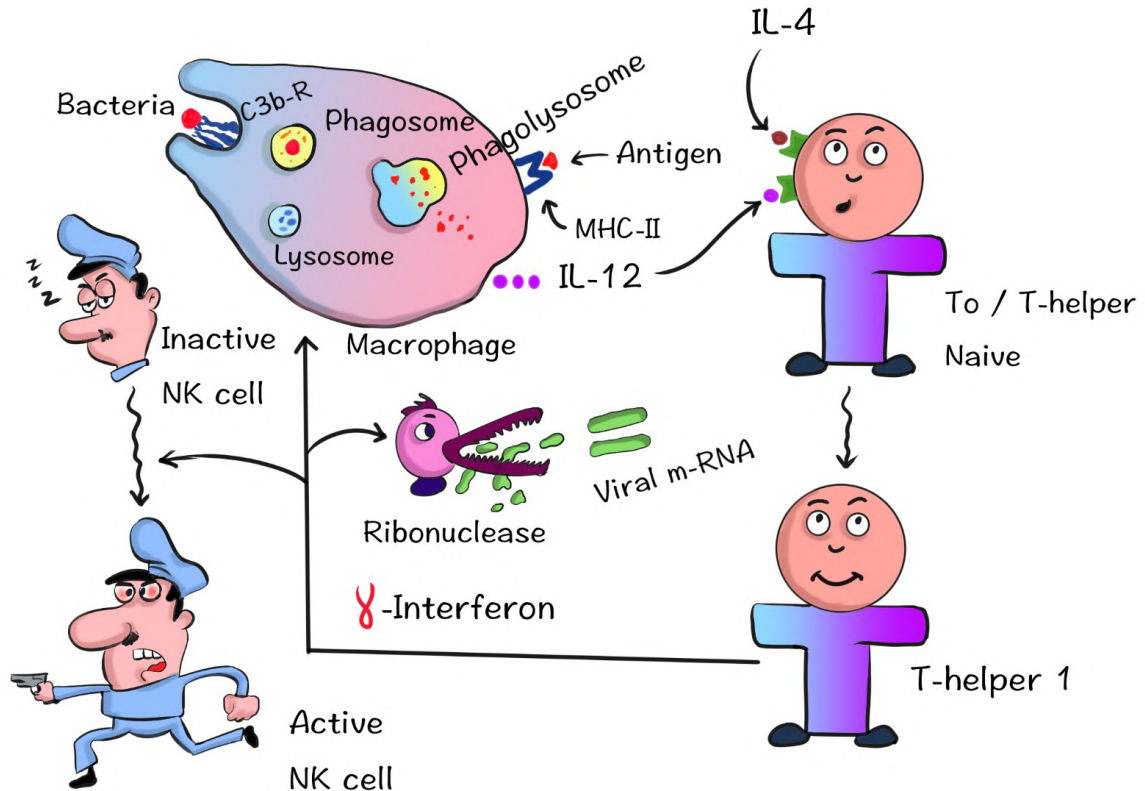
**H**ay fever  
**G**oodpasture syndrome  
**M**ultiple **S**clerosis  
**S**LE



### Subsets of Helper T Cells

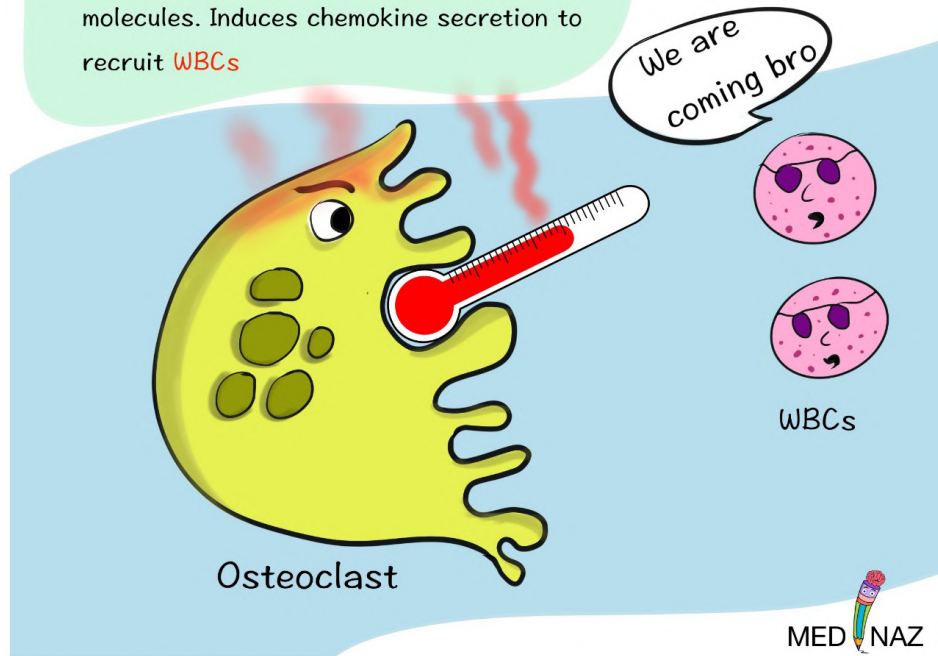


### NK cell activation



# IL-1

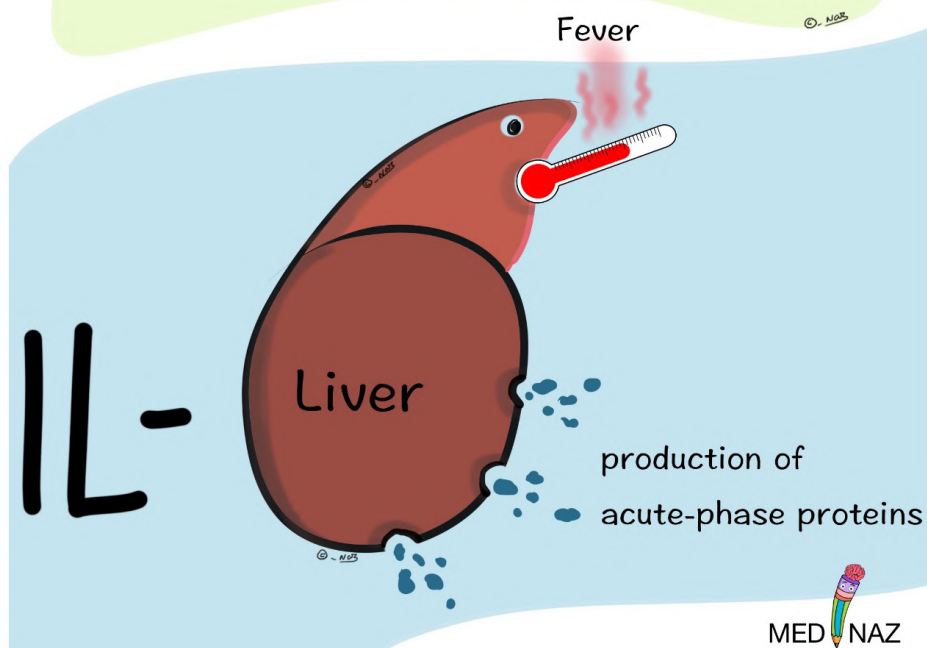
- ↳ Also known as **osteoclast-activating factor**
- ↳ Causes **fever**, acute inflammation
- ↳ Activates endothelium to express adhesion molecules. Induces chemokine secretion to recruit **WBCs**



# Interleukin - 6

www.medinaz.com

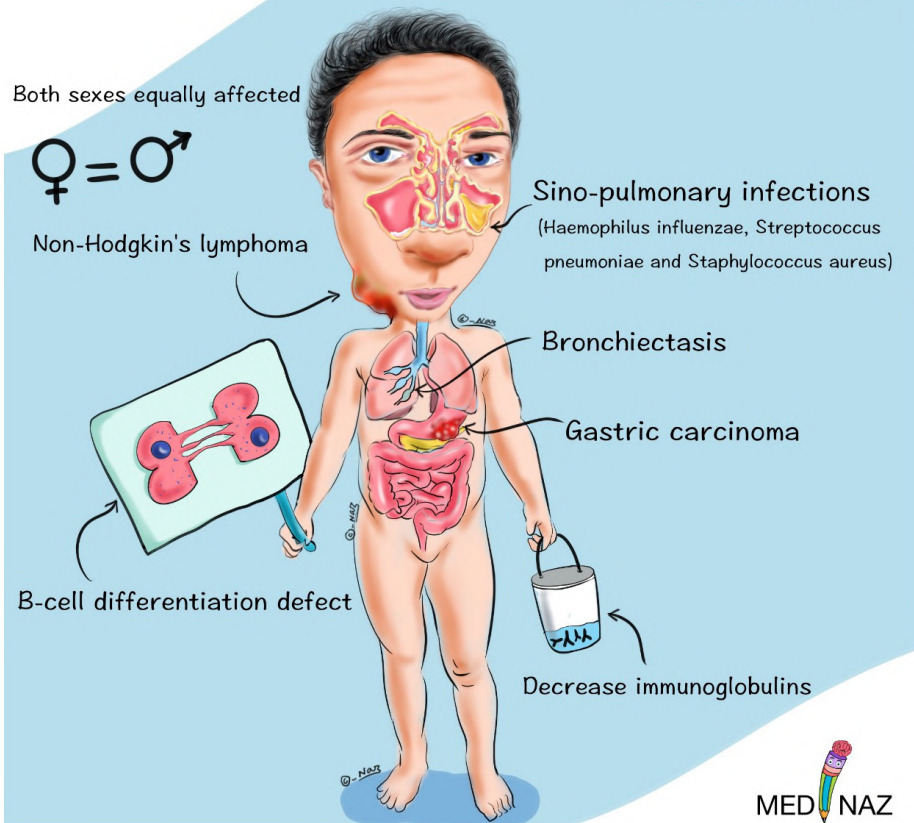
- Causes **fever** and stimulates production of **acute-phase proteins**
- Can mediate fever and sepsis



MED NAZ

## Common variable immunodeficiency

www.medinaz.com



## DiGeorge syndrome

